

PART - 1

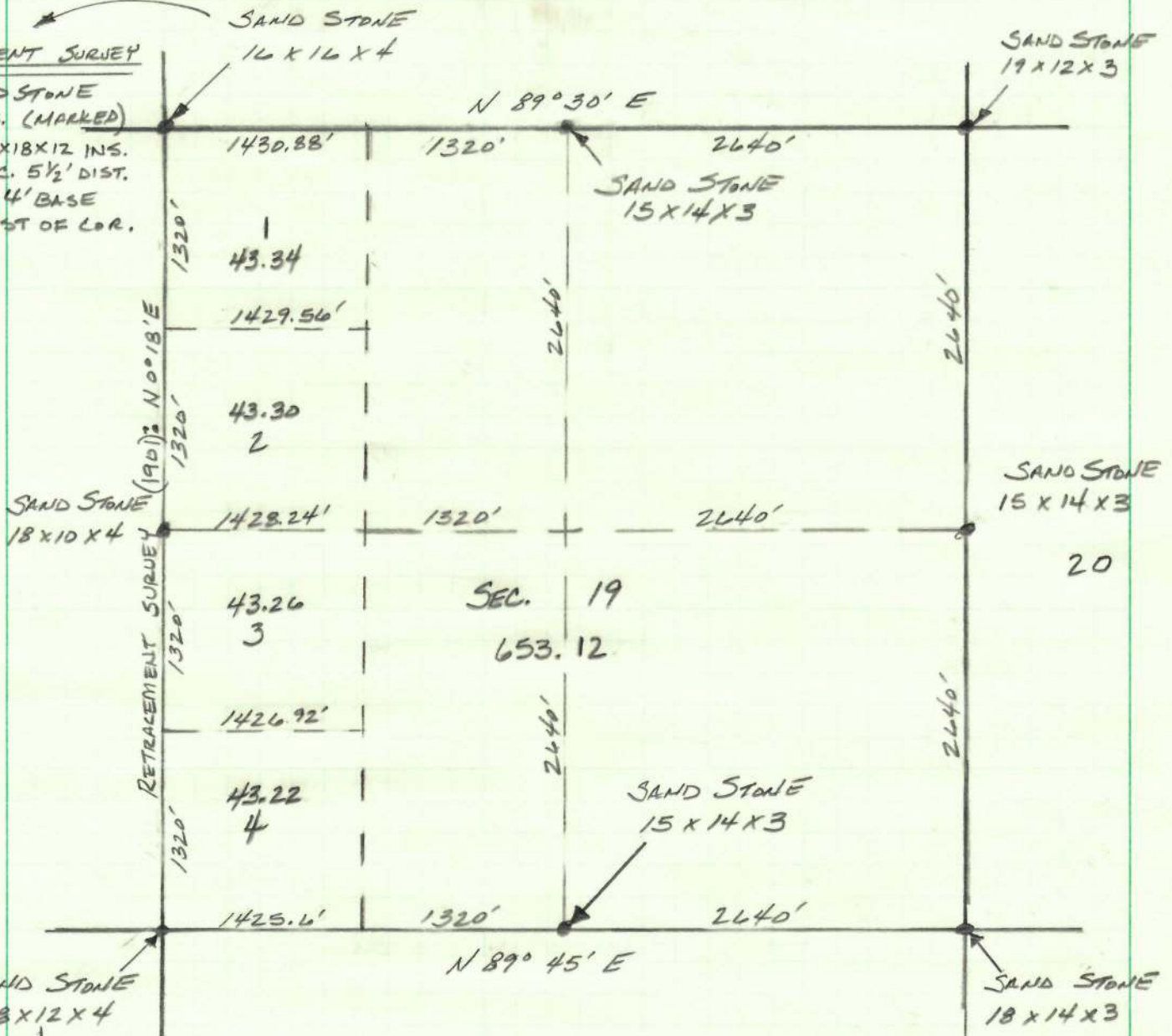
ORIGINAL SURVEY
SECTION 19

18

17

(1901)
RETRACEMENT SURVEY

FOUND SAND STONE
5X10X3 INS. (MARKED)
DUG PITS 18X18X12 INS.
IN EACH SEC. 5 1/2' DIST.
RAISE MND. 4' BASE
2' HIGH WEST OF COR.



RETRACEMENT SURVEY (1901)

FOUND SAND STONE 6X10X3 INS. (MARKED)
DUG PITS 18X18X12 INS. IN EACH SEC. 5 1/2' DIST.
RAISE MND. 4' BASE 2' HIGH WEST OF COR.

COMPUTATION NOTES:

- CHAINS WERE MULTIPLIED BY $\frac{6696}{CH}$.
- LOT DISTANCES WERE OBTAINED BY "ACRES - SIDE" METHOD.



29